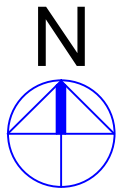


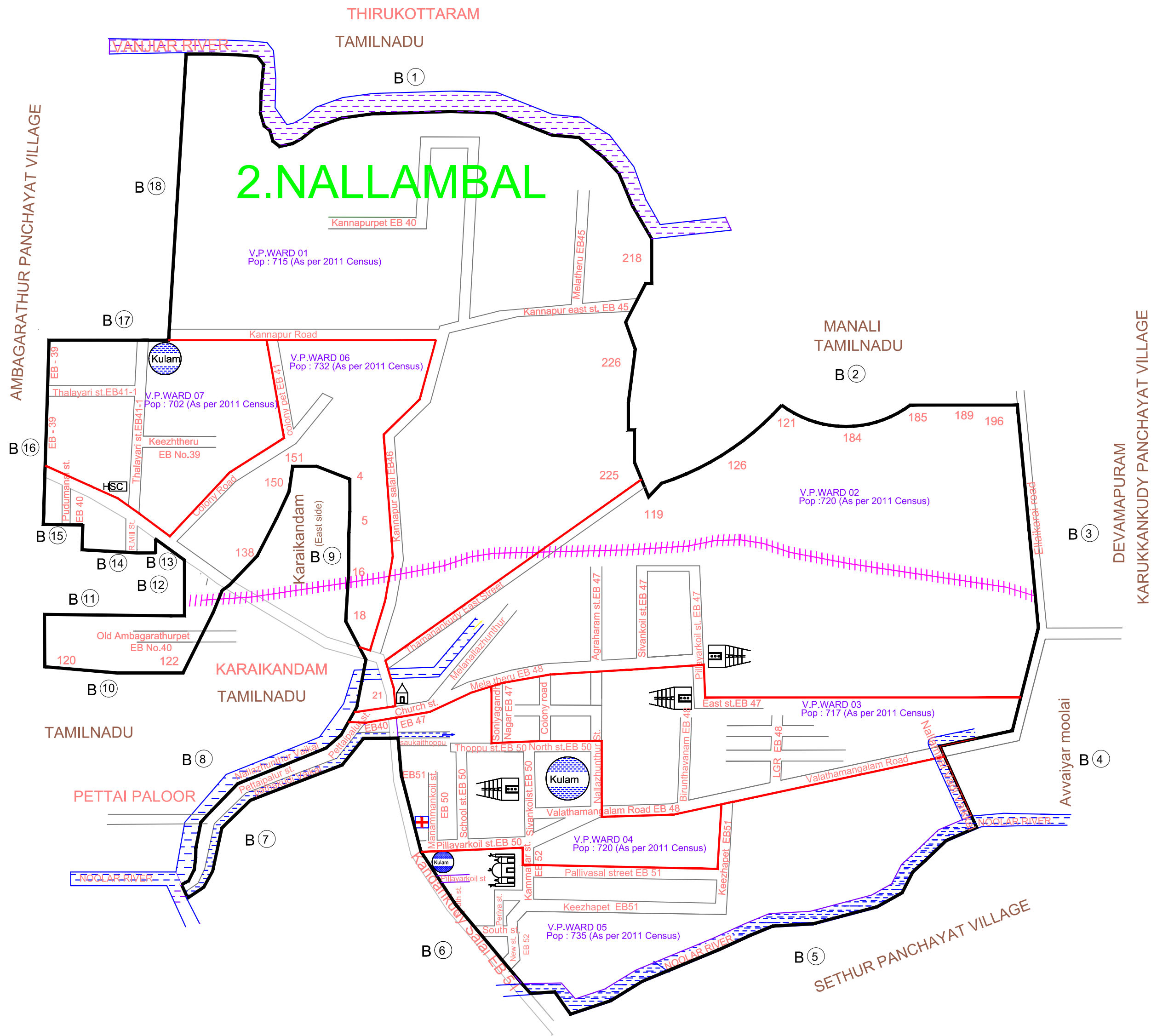
THIRUNALLAR COMMUNE PANCHAYAT

DELIMITATION OF WARDS -2015 ( As per 2011 Census)

Draft Panchayat Village Map



DRAFT MAP SHOWING THE BOUNDARIES OF (i) NALLAMBAL PANCHAYAT VILLAGE ( COMMUNE PANCHAYAT WARDS)  
Population:- 5041 (As per 2011 census)



| Census Enumeration Blockwise Population<br>(As per 2011 Census) |         |               |       |                     |       |
|---|---------|---------------|-------|---------------------|-------|
| V.P. WARD NO.   | EB NO.  | EB POPULATION |       | V.P.WARD POPULATION |       |
|   |         | SC            | TOTAL | SC                  | TOTAL |
| 1   | 45      | 053           | 261   | 100                 | 715   |
|   | 46 pt.  | 047           | 454   |                     |       |
| 2   | 46 pt.  | -             | 184   | 102                 | 720   |
|   | 47 pt.  | 102           | 536   |                     |       |
| 3   | 47 pt.  | -             | 050   | 356                 | 717   |
|   | 48 pt.  | 356           | 667   |                     |       |
| 4   | 48 pt.  | -             | 050   | 107                 | 720   |
|   | 50      | 107           | 621   |                     |       |
| 5   | 52 pt.  | -             | 049   | 316                 | 735   |
|   | 51      | 316           | 368   |                     |       |
| 6   | 40      | 090           | 514   | 308                 | 732   |
|   | 41-2 pt | 218           | 218   |                     |       |
| 7   | 41-1    | -             | 552   | -                   | 702   |
|   | 41-2 pt | -             | 150   |                     |       |
| Total   |         |               |       | 1289                | 5041  |

LIST OF COMMUNE PANCHAYAT WARD BOUNDARIES

| DIRECTION | B.No. | BOUNDARIES  |
|-----------|-------|---|
| NORTH     | 1     | Vanjar river (South side)<br>From Sozhankurichi road to Manali  |
|           | 2     | Manali (TamilNadu)<br>The Common boundary line between Manali village in Tamil Nadu and U.T. of Puducherry      |
| EAST      | 3     | Devamapuram<br>The Common boundary line between Karukkankudy Panchayat village and Nallambal Panchayat Village  |
|           | 4     | Nallambal Vadi Vaikkal<br>From Valathamangalam Road to Noolar   |
| SOUTH     | 5     | Noolar River<br>From Avvaiyarmoolai to Kandankudy Road  |
|           | 6     | Kandankudy road<br>From Kandankudy Road to Pathakudy Channel Culvert  |
|           | 7     | Pathakudy Channel<br>From Pathakudy Channel Culvert to Pettai Paloor Noolar Shutters                            |
| WEST      | 8     | Nallezhundur Channel<br>From Pettai Paloor Noolar Shutters to Kandankudy Salai Culvert                          |
|           | 9     | Karaikandam(TamilNadu)<br>The common boundary line between Tamilnadu State (Karaikandam) and U.T. of Puducherry |
|           | 10    | Old Ambagarathur Pet<br>The common boundary line between Tamilnadu State (Karaikandam) and U.T. of Puducherry   |
|           | 11    | Railway Track<br>From Kalladi Pet terminal to Pattakal street terminal  |
|           | 12    | The Common boundary line between Ambagarathur Panchayat village and Nallambal Panchayat Village                 |
|           | 13    | Kandankudy Salai<br>From East Street to Rise Mill Street  |
|           | 14    | West street<br>From Kandhankudy Road to Iyyan Kulam Street  |
|           | 15    | Iyyankulam street<br>From West Street to Kandhankudy Road   |
|           | 16    | Mariamman koil street<br>From Kandhankudy Road to Perumal koil Street   |
|           | 17    | Vaniyan street<br>From Perumal koil Street to Odakarai Street   |
|           | 18    | Odaikkari street<br>From Vaanian Street to Sozhankurichi road   |
|           | 19    | Sozhankurichi road<br>From Odakarai street to Vanjar  |

N.B.: Excluding the houses situated in both sides of Pattakal St, East St., Pallivasal St., West St., Iyyankulam St., Mariamman Koil St., Vaniyan St., Odakarai St., Sozhankurichi Road.

LEGEND :-

Village Boundary

Ward Boundary

Streets

Channels

Scale:Not to scale